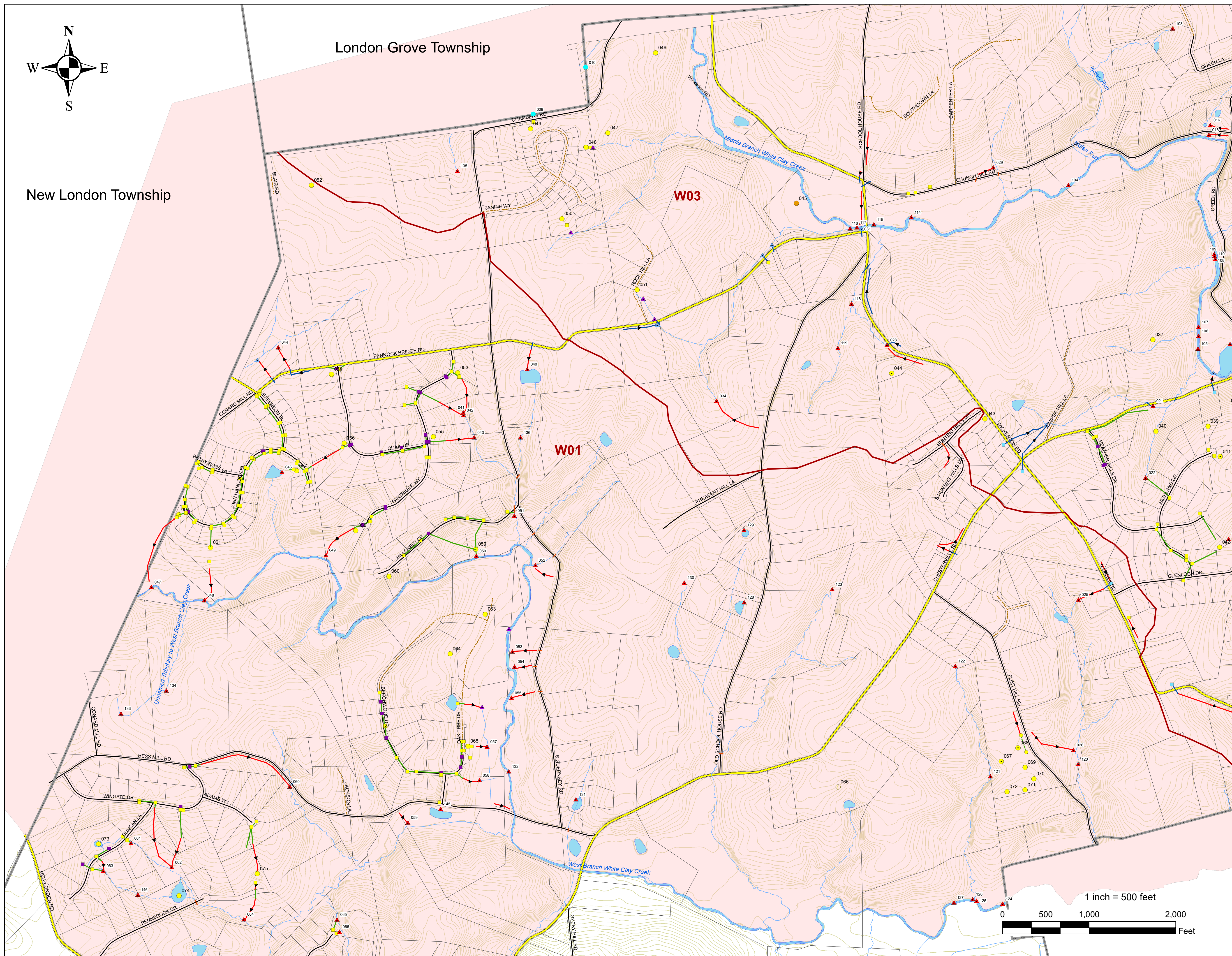
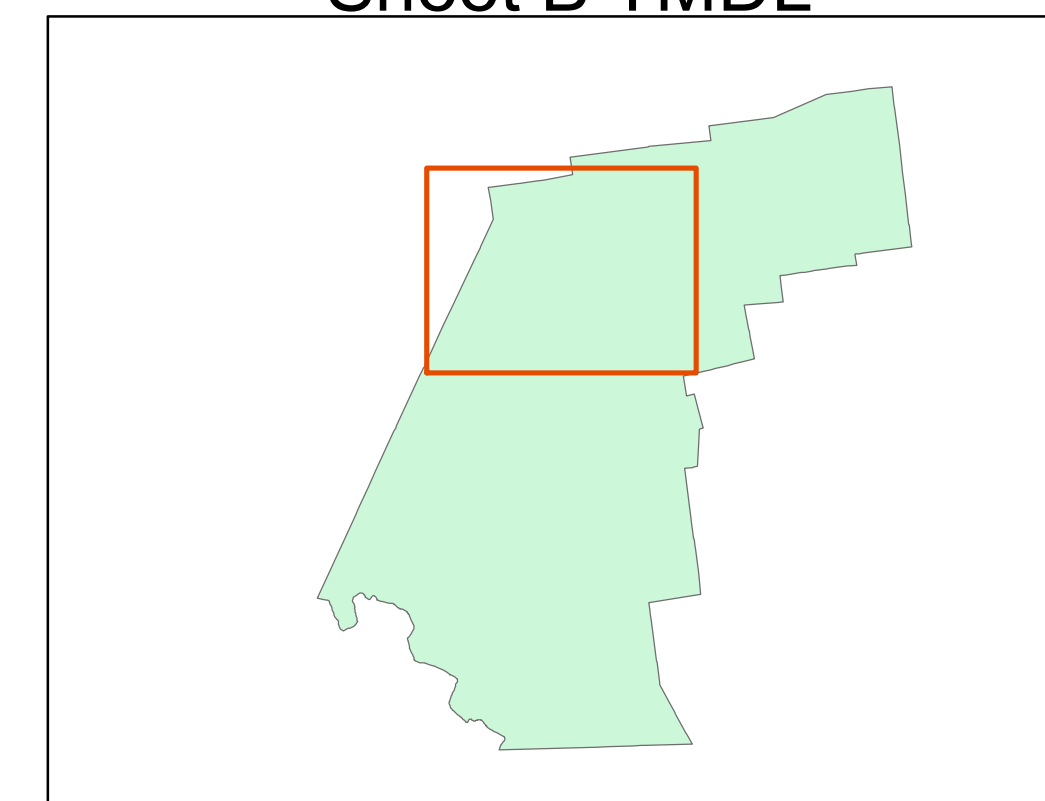


London Grove Township

New London Township

Franklin Township Stormwater Conveyance and Storm Sewersheds Sheet B TMDL



Legend

- MS4 Outfalls
 - PennDOT Outfalls
 - Private Outfalls
 - MS4 Observation Points
 - Municipal Inlet
 - Double Grate Inlet
 - Private Inlets
 - PennDOT Inlets
 - Junction Box
 - Stormwater Pipe
 - Crosspipe/Culvert
 - PennDOT Stormwater Pipe
 - Private Stormwater Pipe
- ### Existing Stormwater BMPs with ID#
- TOWNSHIP, OPEN
 - TOWNSHIP, UNDERGROUND
 - Private, Proposed
 - PRIVATE, OPEN
 - PRIVATE, UNDERGROUND
 - Swales
 - PennDOT Swales
 - White Clay Creek Subwatershed Boundary
 - Municipal Boundary
 - Streams
 - State Road
 - Township Road
 - Private Road
 - Township Owned Parcels
 - Parcels
 - Ponds/Lakes
 - Urban Areas 2010
 - 10' Contours
- Outfall_Label
- 016
 - 018
 - 021
 - 022
 - 025
 - 026
 - 028
 - 029
 - 031
 - 034
 - 040
 - 041
 - 042
 - 043
 - 044
 - 046
 - 047
 - 048
 - 049
 - 050
 - 051
 - 052
 - 053
 - 054
 - 055
 - 057
 - 058
 - 059
 - 060
 - 061
 - 062
 - 063
 - 064
 - 065
 - 066
 - 103
 - 104
 - 105
 - 106
 - 107
 - 108
 - 109
 - 110
 - 111
 - 112
 - 114
 - 115
 - 116
 - 117
 - 118
 - 119
 - 120
 - 121
 - 122
 - 123
 - 124
 - 125
 - 126
 - 127
 - 128
 - 129
 - 130
 - 131
 - 132
 - 133
 - 134
 - 135
 - 136
 - 139
 - 145
 - 146
 - MS4_OP_NU
 - 009
 - 010

Notes:
- All pipe lengths are estimated, not to scale
- Parcel boundaries, Municipal Boundaries, and Roads Data provided by Chester County GIS.
- Storm Sewer System data based on approved subdivision plans and field verified provided by the Township, 2016
- Streams data provided by Chester Couy GIS via Chester County Streams (line Features) - via 1993 photo interpretation
- 2010 Urbanized Areas data provided by EMAPGIS, 2016.

LTL CONSULTANTS, LTD.
ENGINEERS & CODE OFFICIALS

P.O. BOX 241
ONE TOWN CENTRE DR.
OLEY, PA 19547

(610) 987-9290
FAX: (610) 987-9288