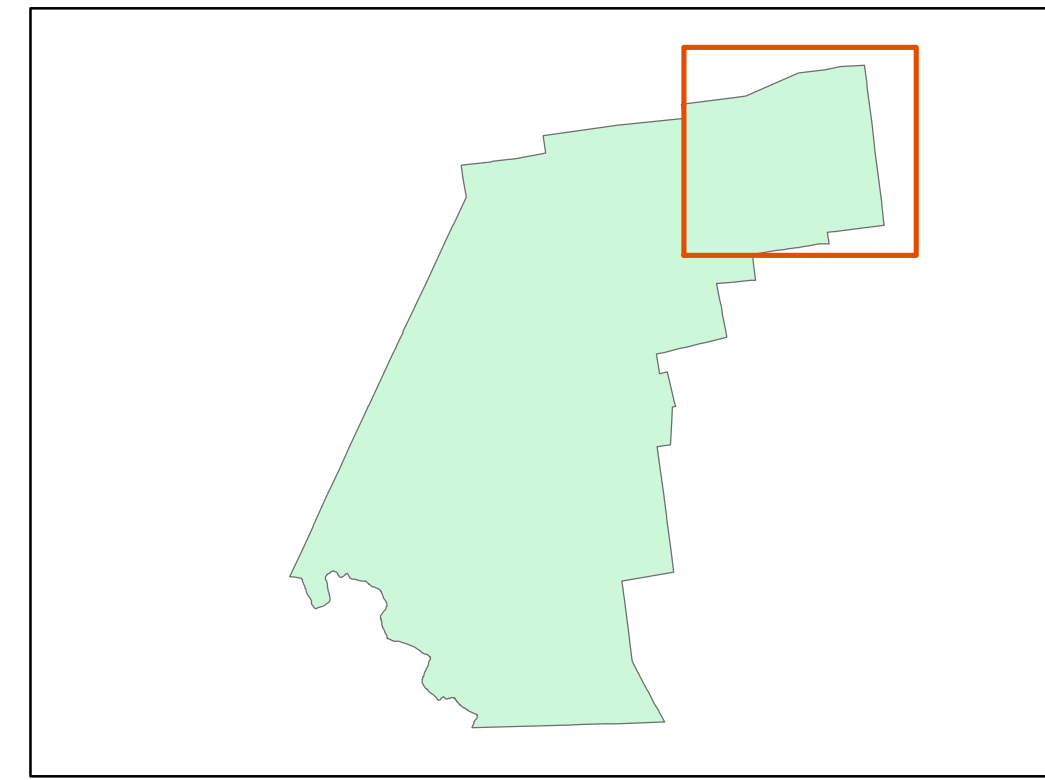


London Grove Township

New Garden Township

London Britain Township

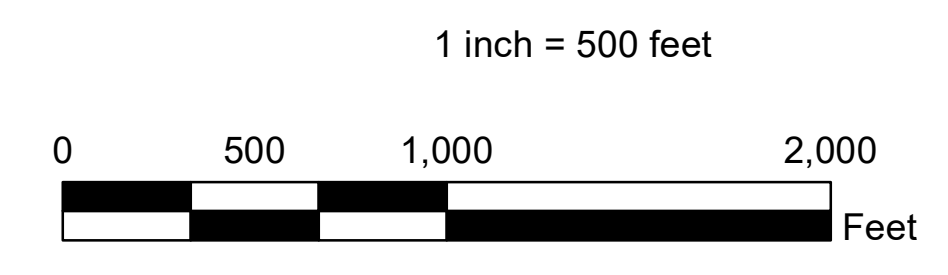
Franklin Township Stormwater Conveyance and Storm Sewersheds Sheet A TMDL



Legend

- MS4 Outfalls
 - MS4 Observation Points
 - PennDOT Outfalls
 - Municipal Inlet
 - Double Grate Inlet
 - Private Inlets
 - PennDOT Inlets
 - Junction Box
 - Stormwater Pipe
 - Crosspipe/Culvert
 - PennDOT Stormwater Pipe
 - Private Stormwater Pipe
- Existing Stormwater BMPs with ID#**
- TOWNSHIP, OPEN
 - TOWNSHIP, UNDERGROUND
 - Private, Proposed
 - PRIVATE, OPEN
 - PRIVATE, UNDERGROUND
 - Swales
 - PennDOT Swales
 - White Clay Creek Subwatershed Boundary
 - Streams
 - State Road
 - Township Road
 - Private Road
 - Township Owned Parcels
 - Parcels
 - Municipal Boundary
 - Ponds/Lakes
 - Urban Areas 2010
 - 10' Contours
- | | |
|---------------|-----|
| Outfall_Label | 001 |
| | 002 |
| | 003 |
| | 004 |
| | 005 |
| | 006 |
| | 010 |
| | 011 |
| | 012 |
| | 015 |
| | 016 |
| | 017 |
| | 018 |
| | 021 |
| | 022 |
| | 025 |
| | 028 |
| | 029 |
| | 031 |
| | 034 |
| | 088 |
| | 089 |
| | 090 |
| | 091 |
| | 092 |
| | 093 |
| | 094 |
| | 095 |
| | 096 |
| | 097 |
| | 098 |
| | 099 |
| | 100 |
| | 101 |
| | 102 |
| | 103 |
| | 104 |
| | 105 |
| | 106 |
| | 107 |
| | 108 |
| | 109 |
| | 110 |
| | 111 |
| | 112 |
| | 113 |
| | 114 |
| | 115 |
| | 116 |
| | 117 |
- | | |
|------------|-----|
| MS4_OP_NUM | 001 |
| | 002 |
| | 003 |
| | 004 |
| | 005 |
| | 006 |
| | 007 |
| | 008 |

Notes:
 - All pipe lengths are estimated, not to scale
 - Parcel boundaries, Municipal Boundaries, and Roads Data provided by Chester County GIS.
 - Storm Sewer System data based on approved subdivision plans and field verified provided by the Township, 2016
 - Streams data provided by Chester County GIS via Chester County Streams (line Features) -- via 1983 photo interpretation
 - 2010 Urbanized Areas data provided by EMapGIS, 2016.



LTL CONSULTANTS, LTD.
ENGINEERS & CODE OFFICIALS

P.O. BOX 241
 ONE TOWN CENTRE DR.
 OLEY, PA 19547

(610) 987-9290
 FAX: (610) 987-9288