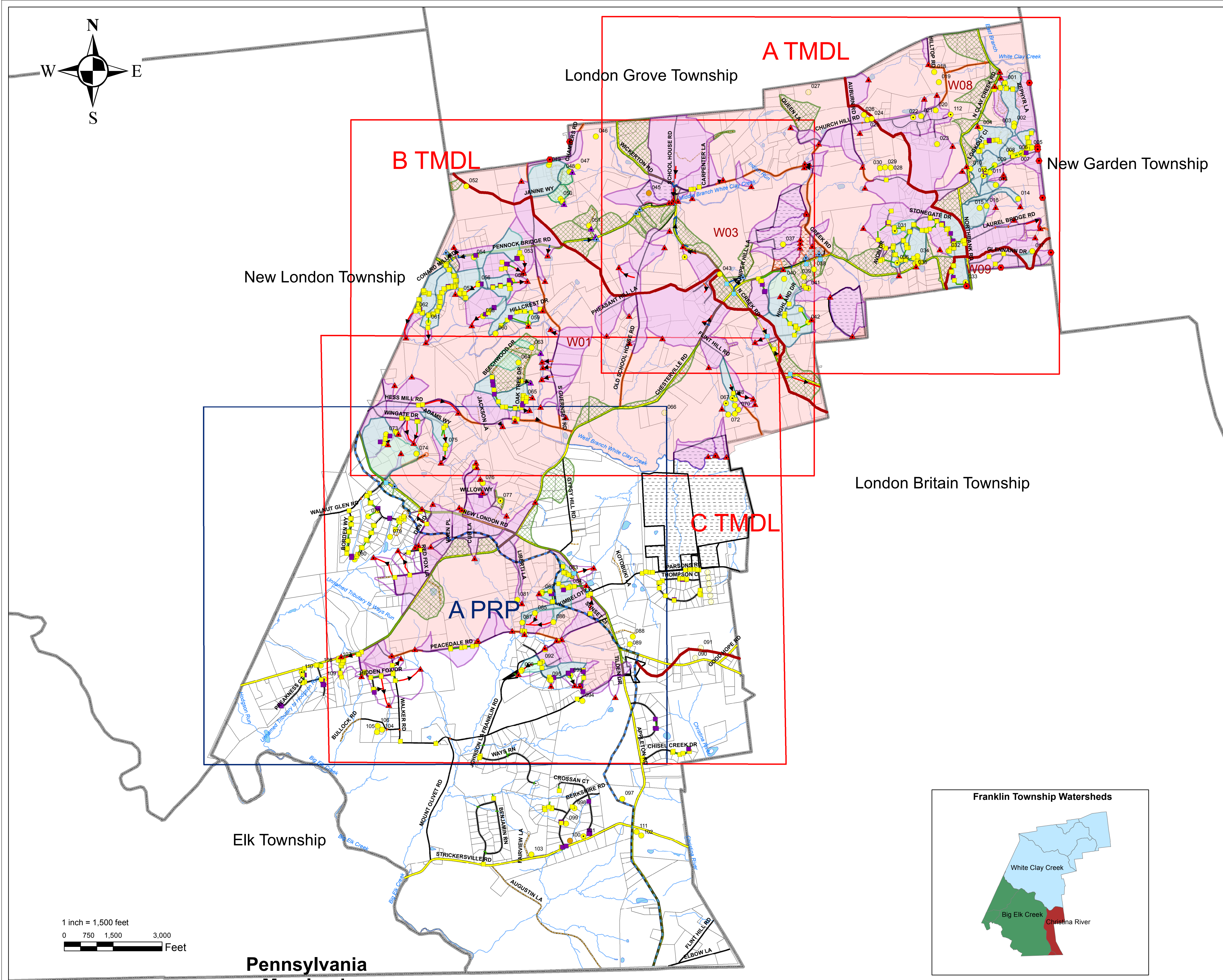
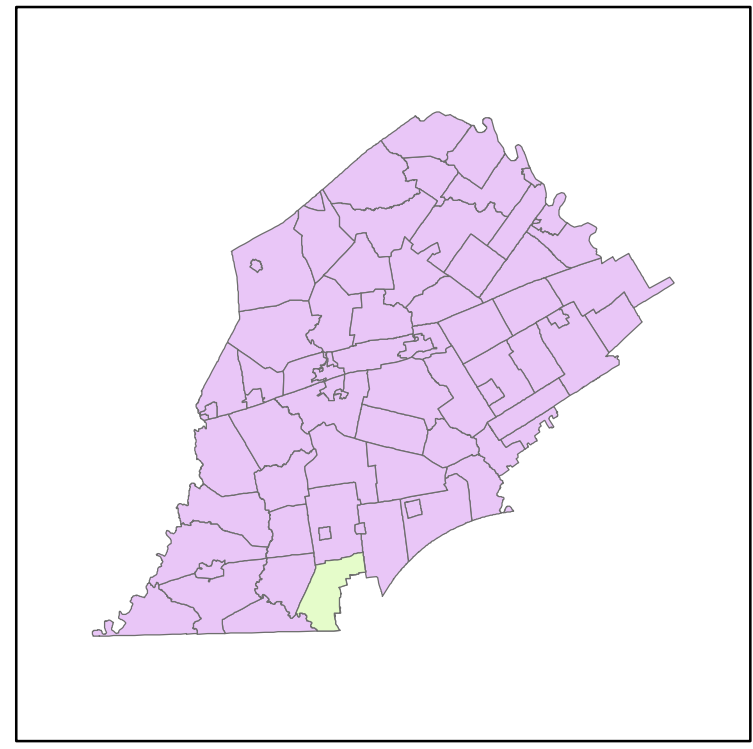
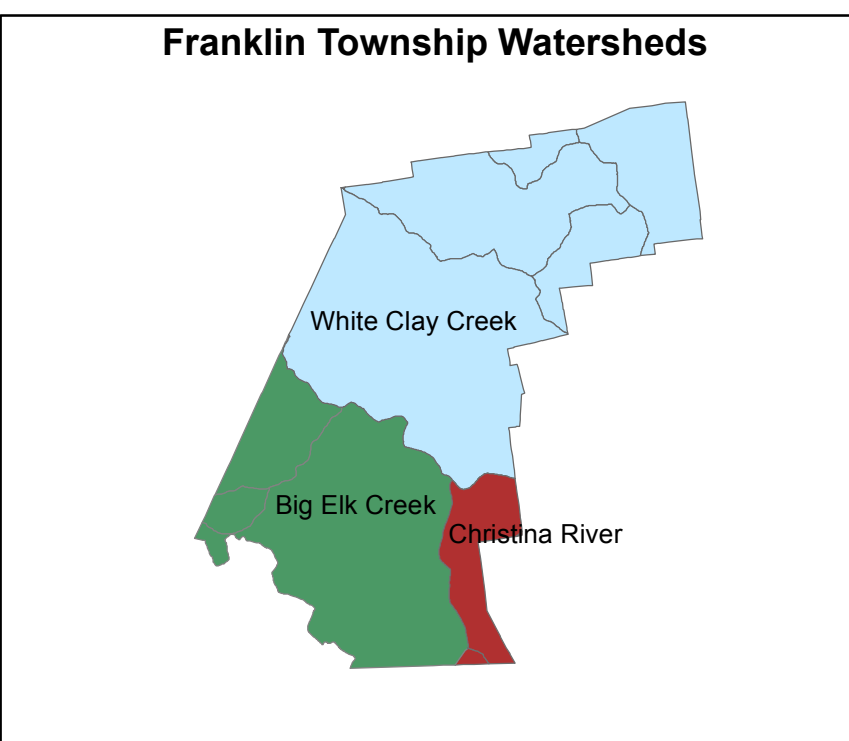


Franklin Township Chester County Stormwater Conveyance Overall Key Map



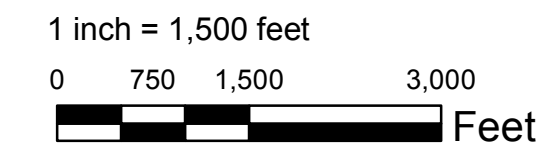
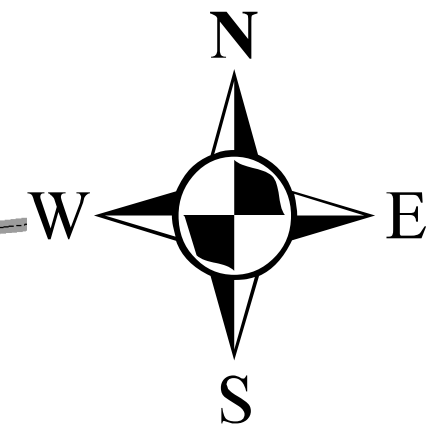
Legend

- ▲ MS4 Outfalls
- ▲ PennDOT Outfalls
- ▲ Private Outfalls
- MS4 Observation Points
- Municipal Inlet
- Double Grate Inlet
- Private Inlets
- PennDOT Inlets
- Junction Box
- Stormwater Pipe
- Crosspipe/Culvert
- PennDOT Stormwater Pipe
- Private Stormwater Pipe
- Existing Stormwater BMPs with ID#
 - TOWNSHIP, OPEN
 - TOWNSHIP, UNDERGROUND
 - Private, Proposed
 - PRIVATE, OPEN
 - PRIVATE, UNDERGROUND
- Swales
- PennDOT Swales
- Chesapeake Bay Watershed
- White Clay Creek Subwatershed Boundary
- BMP Drainage Areas
 - Planning Area - Storm Sewershed areas included with loading calculations
 - Non-Planning Area - Storm Sewershed Area Tributary to MS4 Outfall and Downstream of Urbanized Area (Not Included in Calculations)
 - Non-Planning Area with no flow from Municipal Roads or Property No Outfall to Surface Water within urbanized area
 - Non-Planning Area Sheet Flow from Municipal Road or Municipal Property less than 300 ft from Surface Water
 - Non-Planning Area Tributary to State or Private Road no Municipal Roads or Property
- Township Owned Parcels
- State Road
- Township Road
- Private Road
- Sheet A TMDL
- Sheet B TMDL
- Sheet C TMDL
- Sheet A PRP
- Urban Areas 2010
- Municipal Boundary
- Streams
- Parcels
- Ponds/Lakes



Notes:
 - All pipe lengths are estimated, not to scale
 - Parcel boundaries, Municipal Boundaries, and Roads Data provided by Chester County GIS.
 - Storm Sewer System data based on approved subdivision plans and field verified provided by the Township, 2016
 - Streams data provided by Chester County GIS via Chester County Streams (line Features) -- via 1993 photo interpretation
 - 2010 Urbanized Areas data provided by EMapGIS, 2016.

LTL CONSULTANTS, LTD.
 ENGINEERS & CODE OFFICIALS
 P.O. BOX 241
 ONE TOWN CENTRE DR.
 OLEY, PA 19547
 (610) 987-9290
 FAX: (610) 987-9288



Pennsylvania
Maryland